

Statement of Performance

October 11, 2012

Product Description

- **Formula:** Spray-Lock® 9500
- **Flooring Material:** Azrock/Color Essence SR
- **Material Acclimatization:** 48 Hours at 72 °F or 22 °C
- **Substrate Used:** Concrete

General Adhesive Information

- See Technical Data for adhesive specifications

Performance

The test results produced a strong bond with acceptable peel and shear strength. Materials tested are approved for use with our adhesive over acceptable substrates. Spray-Lock® does not warrant the dimensional stability of the flooring material regardless of its thickness.

Application Notes

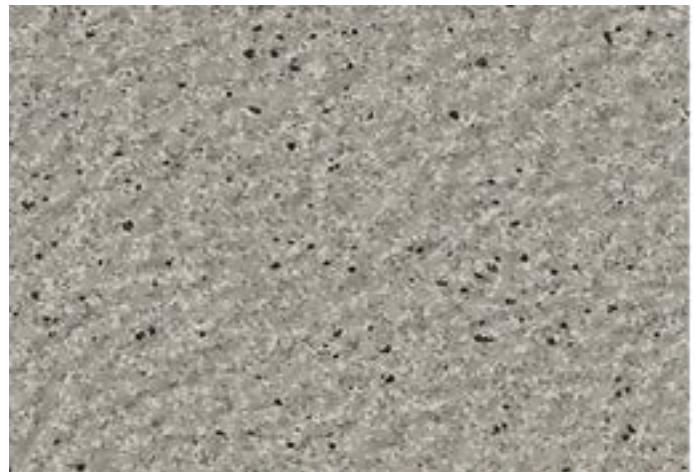
Adhesive was applied as per standard instructions

Approved by



Michael Land
Director of R&D & Tech Services

Image of Material



This report applies to the specific product as supplied to Interlock for testing at the time of the test. Interlock is not responsible for bond performance changes due to conditions beyond our control such as manufacturing changes, composition changes, profile or finish changes, storage, or application techniques. Internal Quality Control methods were followed unless otherwise noted. This document does not represent the opinion of the material manufacturer. This document does not represent a guarantee or promise of performance of the products listed. It only describes testing performed under Interlock's conditions. No warranty is implied. This report shall not be reproduced except in full and with permission from Interlock. Interlock retains sole ownership of the data. Spray-Lock® does not warrant the dimensional stability of the flooring material regardless of its thickness. Spray-Lock® should always be used in accordance with Interlock's issued instructions and procedures consistent with Country specific Standards for floor preparations and installation.